

# Polyethylene Corrosive Cabinet

**ACP80001**



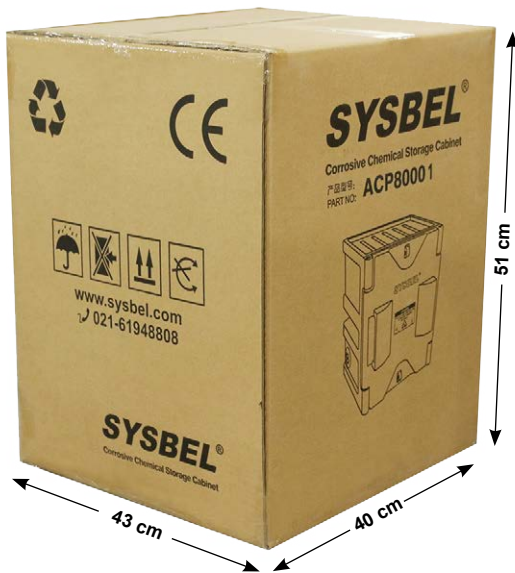
It is CE approved, in line with EPA264.175 of EPA and OSHA29CFR1910.1450 of OSHA as well as Hazardous Chemicals Control Ordinance of SAWS.

## One step forming polyethylene corrosive cabinet provide maximum safety storage protection for storing strong polyethylene or corrosive chemicals

SYSBEL Polyethylene corrosive cabinet, with seamless structure, ensure almost no leakage, and excellent performance of corrosion resistance and secondary leakage prevention and control. Double padlocks help to achieve double-person lock management, which is in line with EPA264.175 of the U.S. EPA, OSHA29CFR1910.1450 of the U.S. OSHA and Chinese Management of Hazardous Chemicals Ordinance (December 1, 2011 edition). On the cabinet doors, there are acidic and corrosive chemical warning labels to give your chemical storage management double guarantee.

## Desktop Single Door Polyethylene Corrosive Cabinet ACP80001

4 Gal storage capacity; all-plastic and no-stopper design, excellent corrosion resistance; the cabinet shelf can be removed according to needs to improve space utilization; both sides of door can be hinged and door can be opened on both sides, to fully use table space; on both sides of cabinet, there are two vents, can open the lid for ventilation or discharge of pressure gas when necessary; double padlock design to meet the requirements for double-person lock management. The product is CE certified.



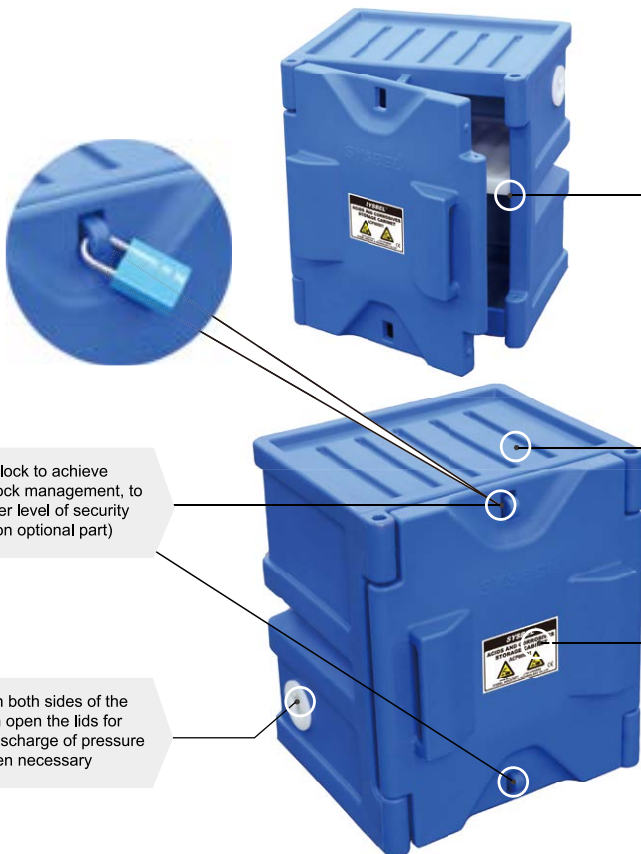
### Polyethylene Corrosive Cabinets

Volume (Gal/L)	Number of Doors and Style	Ext dimension (H×W×D/cm)	Packing dimension (H×W×D/cm)	Adjustable Shelves (Pcs)	Volume of Bottom Leakage(Gal/L)	Shelf Loading Weight(Kgs.)	G.W. (Kgs.)	Model
4/15	One/Desktop	49x41x36	51x43x40	1	1.79/6.8	20	8.8	ACP80001

**ACP80001**



**Product details**



Double padlock to achieve double-person lock management, to provide a higher level of security (padlock is on optional part)

Cabinet shelves can be removed to enhance space utilization

Special design of cabinet top, which can also be used as a worktable

On the door, there are warning labels to remind people to watch out

Two vents on both sides of the cabinet, can open the lids for ventilation or discharge of pressure gas when necessary



Both sides of ACP80001 doors can be hinged, and the door can be opened to both sides, to make full use of the space



Cabinet shelves can be removed to enhance space utilization



No magnetic door holder and excellent in corrosion resistance